



Partnership | Progress | Prosperity

UNIVERSAL HEALTH COVERAGE SERVICE COVERAGE INDEX AT NATIONAL, PROVINCIAL / AREA AND DISTRICT LEVEL 2024



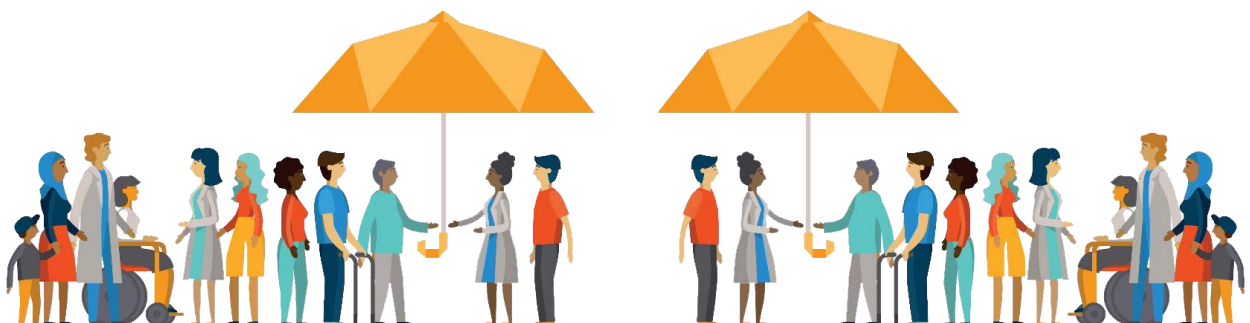
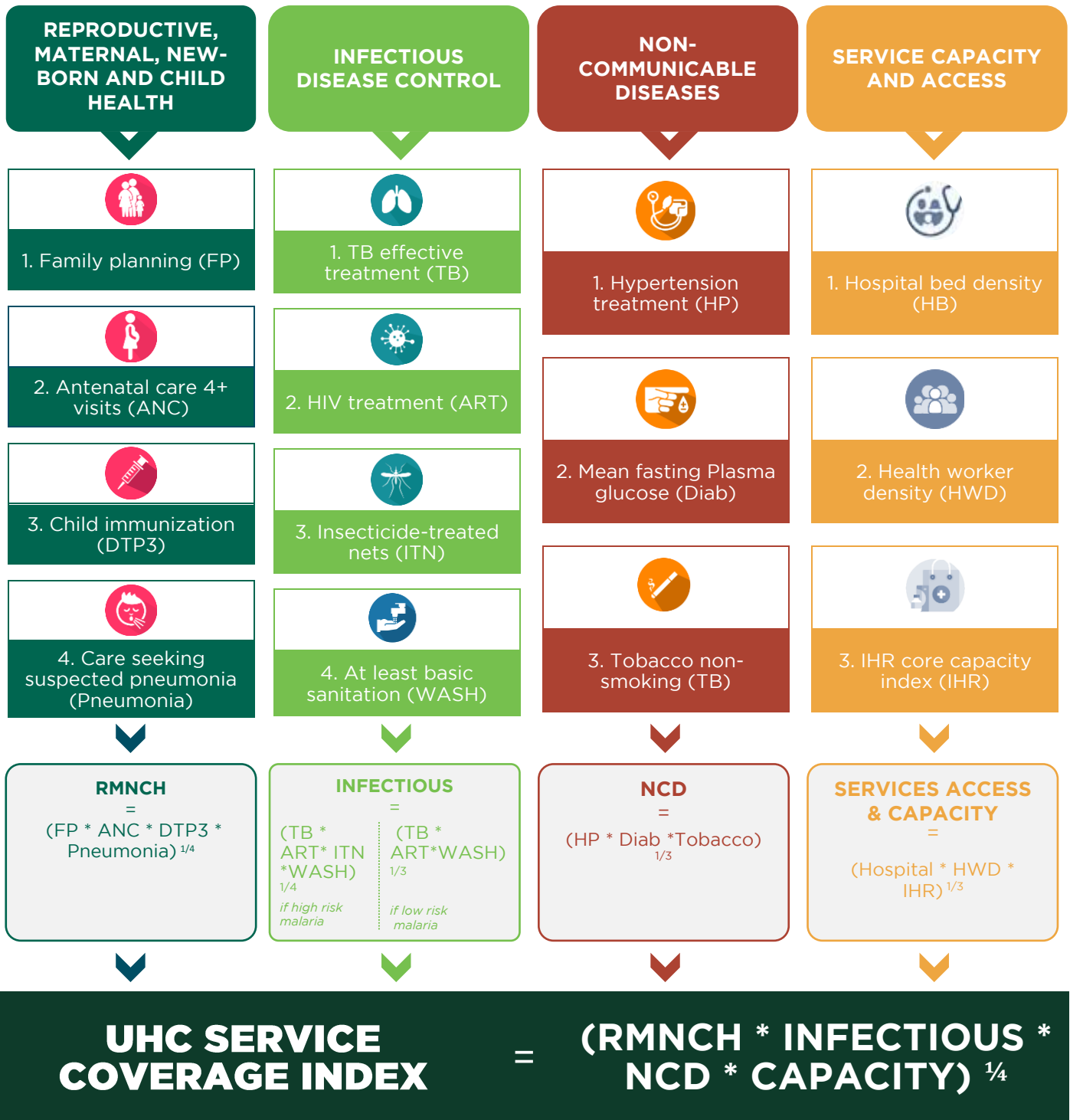
“ Investing in Universal Health Coverage is not just about health; it is about building a fairer, more cohesive society where every citizen has access to quality healthcare services. We recognise that equitable health systems contribute to social stability and economic growth. The government of Pakistan is dedicated to ensuring that all communities, regardless of their background, benefit from comprehensive essential health services that uphold dignity and support well-being for all. ”

Dr. Malik Mukhtar Ahmad
Coordinator to Prime Minister
on Health



Ministry of National Health Services,
Regulations & Coordination

UNIVERSAL HEALTH COVERAGE (UHC) SERVICE COVERAGE INDEX (SCI) CALCULATION



NATIONAL AND PROVINCIAL/FEDERATING AREA UHC SERVICE COVERAGE INDEX FROM 2015 TO 2023

Province/Area	YEAR WISE UHC SCI									%change since 2022	%change Since 2015
	2015	2016	2017	2018	2019	2020	2021	2022	2023		
Islamabad	44.7	47.7	48.9	48.5	51.3	56.0	56.3	58.2	63.8	8.8%	30.1%
Punjab	40.6	42.8	45.6	47.3	48.2	52.0	53.8	53.8	55.4	3.0%	32.4%
Khyber Pakhtunkhwa	36.2	40.7	45.8	47.3	47.6	50.3	49.8	51.1	51.0	0.0%	41.2%
Azad Jammu & Kashmir	39.0	40.7	43.6	46.2	47.9	49.8	50.2	49.3	51.2	3.7%	26.4%
Sindh	37.6	40.6	43.9	45.0	46.7	48.6	48.0	49.2	50.7	3.0%	30.9%
Gilgit Baltistan	35.8	39.3	41.0	42.6	43.5	45.2	48.5	48.5	50.4	3.8%	35.5%
Baluchistan	27.1	29.3	32.3	33.5	35.0	35.2	35.7	37.4	38.4	2.6%	38.0%
Pakistan	39.7	42.1	45.3	46.3	47.1	49.9	52.0	52.7	53.9	2.2%	32.8%

DETAILED BREAKDOWN OF THE UHC SCI AT PROVINCIAL/AREA LEVEL FOR 2023

UHC Indicators	Punjab	Sindh	KP	Balochistan	ICT	GB	AJK	National
Family Planning demand satisfied with modern methods (%)	50.3	44.3	50.2	34.5	55.1	46.4	51.6	54.0
Antenatal care 4+ visits	56.2	44.3	44.6	17.4	80.8	27.9	49.2	51.4
Child immunization (Penta 3) (%)	95.2	76.7	70.9	45.9	86.5	82.2	95.6	84.4
Care-seeking behaviour for child pneumonia (%)	86.1	69.0	70.0	67.6	83.6	76.3	52.8	84.2
RMNCH Aggregate Score	69.3	56.7	57.7	36.9	75.3	53.3	59.8	66.6
Tuberculosis effective treatment (%)	80.2	73.7	55.3	33.3	42.9	95.0	53.4	71.6
HIV treatment (%)	14.7	11.7	19.4	16.2	14.7	14.7	14.7	14.7
Insecticide-treated nets for malaria prevention (%)	NA	NA	NA	NA	NA	NA	NA	NA
At least basic sanitation (%)	89.0	76.0	84.0	44.0	99.0	86.0	82.3	83.0
CD Aggregate Score	47.2	40.3	44.8	28.8	39.7	49.3	40.1	44.3
Hypertension treatment - rescaled value	35.0	35.0	35.0	35.0	35.0	35.0	35.0	35.0
Mean fasting Plasma glucose - rescaled value	68.0	68.0	68.0	68.0	68.0	68.0	68.0	68.0
Tobacco non-smoking - rescaled value	71.0	71.0	71.0	71.0	71.0	71.0	71.0	71.0
NCD Aggregate Score	55.2	55.2	55.2	55.2	55.2	55.2	55.2	55.2
Hospital beds density 10,000 population against threshold (%)	65.3	52.8	53.2	40.5	205.7	44.2	61.5	60.0
Health worker density (Physicians*Psychiatrist*Surgeon) density against threshold (%)	50.5	67.4	49.4	34.0	72.1	43.7	48.4	53.8
International Health Regulations index core capacities- new tool)	43.4	40.8	40.7	36.6	68.6	45.7	46.8	42.7
SCA Aggregate Score	52.4	52.6	47.5	36.9	100.6	44.6	51.8	51.6
UHC Index	55.4	50.7	51.0	38.4	63.8	50.4	51.2	53.9



PUNJAB

UHC SERVICE COVERAGE INDEX 2023

District/ Province/ Area	Population (2023)	District UHC Index Ranking (National)	District UHC Index Ranking (Provincial)	REPRODUCTIVE, MATERNAL, NEW-BORN AND CHILD HEALTH					INFECTIOUS DISEASE CONTROL				
				FP demand satisfied with modern method (%)	ANC - 4+ visits (%)	Child immunizati on (Penta 3) (%)	Care-seeking behavior for child pneumonia (%)	RMNCH Score	TB effective treatment (%)	HIV treatment (%)	Insecticide- treated nets for malaria prevention (%)	At least basic sanitation (%)	Infectious Diseases Score
Attock	2,170,331	41	24	46.4	60.3	98.1	78.3	68.1	63.5	14.7	NA	96.4	44.9
Bakhar	1,957,387	61	33	57.9	34.3	99.1	67.8	60.4	94.6	14.7	NA	60.6	43.9
Bhawalnagar	3,550,191	52	29	66.7	40.3	92.3	69.4	64.4	89.3	14.7	NA	75.5	46.3
Bhawalpur	4,290,200	34	20	68.4	35.5	96.7	69.6	63.6	80.3	14.7	NA	82.8	46.1
Chakwal	1,734,780	19	10	54.1	72.2	98.0	78.4	74.0	75.7	14.7	NA	97.3	47.7
Chinot	1,562,958	55	30	52.7	48.8	97.4	58.1	61.8	93.3	14.7	NA	68.4	45.5
Dera Ghazi Khan	3,393,561	66	35	46.4	36.3	92.4	77.4	58.9	107.0	14.7	NA	74.9	49.1
Faisalabad	9,075,434	13	7	63.5	64.7	95.5	82.7	75.5	65.3	14.7	NA	93.4	44.8
Gujaranwala	5,959,497	20	11	34.8	58.7	93.0	79.6	62.4	94.2	14.7	NA	99.1	51.6
Gujrat	3,219,238	18	9	53.2	70.0	93.1	86.8	74.1	57.1	14.7	NA	98.6	43.6
Hafizabad	1,319,853	43	26	46.2	43.0	98.9	87.6	64.4	70.6	14.7	NA	92.4	45.8
Jhang	3,065,509	45	27	46.5	42.8	93.4	62.1	58.3	102.2	14.7	NA	73.8	48.1
Jhelum	1,382,249	8	3	55.8	81.3	96.1	86.8	78.4	93.9	14.7	NA	96.2	51.1
Kasur	4,084,113	37	21	62.2	42.3	97.1	62.6	63.2	83.1	14.7	NA	96.2	49.0
Khanewal	3,363,934	40	23	63.3	45.3	94.7	80.4	68.4	73.9	14.7	NA	86.4	45.5
Khushab	1,501,025	26	15	50.7	38.7	99.7	77.7	62.4	117.2	14.7	NA	83.4	52.4
Lahore	13,003,583	2	1	60.5	75.4	82.5	90.3	76.4	65.5	14.7	NA	99.2	45.8
Layyah	2,102,297	30	17	65.8	44.5	95.7	78.2	68.4	72.5	14.7	NA	84.7	44.9
Lodhran	1,928,217	50	28	63.3	36.5	95.5	76.2	64.0	63.0	14.7	NA	91.8	44.0
Mandi bahauddin	1,829,408	25	14	39.9	58.6	98.6	88.2	67.2	99.7	14.7	NA	91.1	51.2
Mianwali	1,798,192	33	19	48.8	53.6	98.0	71.6	65.5	92.5	14.7	NA	81.3	48.0
Multan	5,362,077	10	5	71.1	56.8	98.9	77.8	74.7	81.6	14.7	NA	91.2	47.9
Muzafargarh	5,015,112	64	34	48.1	37.5	98.9	65.3	58.4	90.3	14.7	NA	72.9	46.0
Nankana Sahib	1,634,802	32	18	53.6	63.1	99.5	69.8	69.6	87.5	14.7	NA	98.7	50.3
Narowal	1,950,871	29	16	47.6	60.6	98.2	83.6	69.8	62.5	14.7	NA	96.2	44.6
Okara Distrct	3,515,341	38	22	56.6	46.7	93.8	63.6	63.0	88.6	14.7	NA	95.9	50.0
Pakpattan	2,136,079	57	32	60.2	38.3	94.3	64.5	61.2	94.8	14.7	NA	86.8	49.5
Rahim Yar Khan	5,564,467	56	31	63.4	30.8	99.1	80.8	62.9	69.9	14.7	NA	78.6	43.3
Rajanpur	2,380,948	89	36	46.0	27.2	92.6	66.3	52.6	64.2	14.7	NA	69.1	40.3
Rawalpindi	6,118,651	7	2	55.8	75.3	97.5	82.7	76.3	68.6	14.7	NA	97.4	46.2
Sahiwal	2,881,689	16	8	68.9	59.3	98.2	63.0	70.9	79.4	14.7	NA	94.5	48.0
Sargodha	4,334,264	11	6	54.8	49.3	99.4	81.9	68.5	110.8	14.7	NA	87.0	52.2
Sheikhupura	4,049,246	24	13	52.0	62.0	98.4	87.1	72.5	70.1	14.7	NA	99.0	46.8
Sialkot	4,499,203	9	4	49.6	63.4	99.8	83.6	71.6	83.6	14.7	NA	98.9	49.6
Toba Tek Singh	2,523,937	21	12	58.6	51.5	99.2	83.0	70.6	88.9	14.7	NA	90.9	49.2
Vehari	3,430,275	42	25	67.8	44.8	95.6	92.2	71.9	88.3	14.7	NA	66.3	44.2
Punjab	127,688,922			50.3	56.2	95.4	86.1	69.4	80.3	14.7	NA	89.0	47.2



NON-COMMUNICABLE DISEASES				SERVICES CAPACITY & ACCESS				UHC Index 2023	District UHC Index Ranking (Provincial)	District UHC Index Ranking (National)	District/Province/Area
Normal blood pressure	Normal blood sugar	Tobacco non-smoking	Non-communicable Diseases Score	Hospital beds per 10,000 population	Physicians*P sychiatrist*Su rgeon density against threshold (%)	International Health Regulations core capacity index (%)	Services Access & Capacity Score				
35.0	68.0	71.0	55.3	33.6	72.3	61.7	53.1	54.7	24	41	Attock
35.0	68.0	71.0	55.3	41.8	57.8	49.3	49.2	51.8	33	61	Bakhar
35.0	68.0	71.0	55.3	39.7	58.0	49.5	48.5	53.2	29	52	Bhawalnagar
35.0	68.0	71.0	55.3	68.3	59.3	50.6	59.0	55.6	20	34	Bhawalpur
35.0	68.0	71.0	55.3	41.4	72.9	62.2	57.2	57.8	10	19	Chakwal
35.0	68.0	71.0	55.3	40.8	60.4	51.6	50.3	52.9	30	55	Chinot
35.0	68.0	71.0	55.3	35.2	49.2	42.0	41.7	50.8	35	66	Dera Ghazi Khan
35.0	68.0	71.0	55.3	68.9	71.9	61.4	67.2	59.5	7	13	Faisalabad
35.0	68.0	71.0	55.3	56.6	70.7	60.4	62.3	57.7	11	20	Gujaranwala
35.0	68.0	71.0	55.3	56.4	73.1	62.4	63.6	58.1	9	18	Gujrat
35.0	68.0	71.0	55.3	46.0	64.9	55.3	54.9	54.7	26	43	Hafizabad
35.0	68.0	71.0	55.3	52.0	62.7	53.5	55.9	54.2	27	45	Jhang
35.0	68.0	71.0	55.3	53.2	76.3	65.1	64.2	61.4	3	8	Jhelum
35.0	68.0	71.0	55.3	41.5	65.7	56.0	53.5	55.0	21	37	Kasur
35.0	68.0	71.0	55.3	40.6	64.3	54.9	52.3	54.8	23	40	Khanewal
35.0	68.0	71.0	55.3	50.7	65.0	55.4	56.7	56.6	15	26	Khushab
35.0	68.0	71.0	55.3	157.7	80.7	68.8	95.7	65.6	1	2	Lahore
35.0	68.0	71.0	55.3	52.2	67.1	57.2	58.5	56.1	17	30	Layyah
35.0	68.0	71.0	55.3	46.9	60.6	51.7	52.8	53.6	28	50	Lodhran
35.0	68.0	71.0	55.3	42.7	65.9	56.2	54.1	56.6	14	25	M. Bahauddin
35.0	68.0	71.0	55.3	59.0	59.3	50.6	56.2	55.9	19	33	Mianwali
35.0	68.0	71.0	55.3	91.6	66.1	56.4	69.9	61.0	5	10	Multan
35.0	68.0	71.0	55.3	38.5	53.7	45.8	45.6	51.0	34	64	Muzzafargarh
35.0	68.0	71.0	55.3	33.5	68.1	58.1	51.0	56.1	18	32	Nankana Sahib
35.0	68.0	71.0	55.3	50.9	68.8	58.7	59.0	56.4	16	29	Narowal
35.0	68.0	71.0	55.3	40.2	64.9	55.3	52.4	55.0	22	38	Okara Distrc
35.0	68.0	71.0	55.3	29.1	60.7	51.8	45.1	52.4	32	57	Pakpattan
35.0	68.0	71.0	55.3	49.6	57.5	49.1	51.9	52.9	31	56	Rahim Yar Khan
35.0	68.0	71.0	55.3	25.9	46.6	39.7	36.3	45.4	36	89	Rajapur
35.0	68.0	71.0	55.3	93.5	80.1	68.4	80.0	62.8	2	7	Rawalpindi
35.0	68.0	71.0	55.3	62.4	65.3	55.7	61.0	58.2	8	16	Sahiwal
35.0	68.0	71.0	55.3	83.0	67.0	57.1	68.2	60.6	6	11	Sargodha
35.0	68.0	71.0	55.3	42.1	67.9	57.9	54.9	56.6	13	24	Sheikhupura
35.0	68.0	71.0	55.3	73.4	76.7	65.5	71.7	61.2	4	9	Sialkot
35.0	68.0	71.0	55.3	44.3	70.2	59.9	57.1	57.5	12	21	Toba Tek Singh
35.0	68.0	71.0	55.3	42.8	60.3	51.4	51.0	54.7	25	42	Vehari
35.0	68.0	71.0	55.2	65.3	50.5	43.4	52.4	55.5			Punjab



SINDH

UHC SERVICE COVERAGE INDEX 2023

District/ Province/ Area	Population (2023)	District UHC Index Ranking (National)	District UHC Index Ranking (Provincial)	REPRODUCTIVE, MATERNAL, NEW-BORN AND CHILD HEALTH					INFECTIOUS DISEASE CONTROL				
				FP demand satisfied with modern method (%)	ANC - 4+ visits (%)	Child immunizati on (Penta 3) (%)	Care- seeking behavior for child pneumonia	RMNCH Score	TB effective treatment (%)	HIV treatment (%)	Insecticide- treated nets for malaria prevention	At least basic sanitation (%)	Infectious Diseases Score
Badin	1,945,335	102	26	64.2	19.2	80.5	42.8	45.4	61.3	11.7	NA	41.6	31.0
Dadu	1,740,757	87	18	34.0	29.4	82.2	77.7	50.3	51.1	11.7	NA	74.4	35.4
Ghotki	1,771,019	91	20	43.5	42.6	69.3	73.7	55.5	58.6	11.7	NA	63.8	35.2
Hyderabad	2,430,358	3	2	62.3	67.4	78.6	64.9	68.0	129.8	11.7	NA	90.0	51.5
Jacobabad	1,173,044	81	16	51.7	28.6	78.9	83.4	55.9	84.9	11.7	NA	79.4	42.9
Jamshoro	1,116,306	68	11	41.9	26.0	70.6	49.9	44.3	127.3	11.7	NA	70.4	47.2
Kambar Shadad Kot	1,563,465	98	24	35.0	38.5	71.0	59.9	48.9	65.3	11.7	NA	78.7	39.2
Karachi Central	3,818,897	17	4	50.3	89.9	76.9	90.6	74.9	75.9	11.7	NA	98.4	44.4
Karachi East	3,918,224	14	3	41.4	64.8	70.7	76.6	61.7	57.2	11.7	NA	99.8	40.6
Karachi South	2,327,674	1	1	46.4	82.3	84.4	78.1	70.8	119.9	11.7	NA	99.6	51.9
Karachi West	2,676,977	58	10	39.3	66.1	72.8	58.3	57.6	54.3	11.7	NA	98.4	39.7
Keamari	1,232,850	78	15	39.3	66.1	72.8	58.3	57.6	48.4	11.7	NA	98.4	38.2
Kashmor	2,066,596	129	30	15.9	7.5	68.4	94.4	29.6	10.9	11.7	NA	68.0	20.5
Khairpur	2,595,205	70	12	49.7	44.9	87.6	69.1	60.6	66.6	11.7	NA	51.9	34.3
Korangi	3,126,165	28	6	44.7	78.6	78.6	76.6	67.8	70.4	11.7	NA	100.0	43.5
Larkana	1,782,852	36	8	52.6	44.7	79.7	59.9	57.9	96.7	11.7	NA	78.0	44.5
Malir	2,430,066	22	5	60.9	64.2	68.3	66.0	64.8	64.0	11.7	NA	97.6	41.8
Matlari	848,621	77	14	46.6	52.9	79.9	70.6	61.1	72.5	11.7	NA	60.5	37.2
Mirpur Khas	1,679,878	85	17	32.6	28.4	71.0	74.7	47.1	95.6	11.7	NA	47.1	37.5
Naushero Feroz	1,775,488	72	13	42.4	42.9	83.1	77.7	58.5	69.2	11.7	NA	89.5	41.7
Sanghar	2,306,394	93	22	49.8	21.6	90.6	79.3	52.7	75.3	11.7	NA	52.3	35.9
S. Benazirabad	1,843,447	49	9	44.9	35.1	81.6	88.9	58.1	127.3	11.7	NA	56.9	43.9
Shikkarpur	1,385,087	96	23	39.1	24.9	60.7	57.0	42.8	67.5	11.7	NA	58.3	35.9
Sujawal	838,539	117	28	31.7	29.8	21.1	59.1	32.9	38.7	11.7	NA	33.9	24.9
Sukkar	1,638,426	35	7	51.6	54.1	67.3	75.5	61.4	98.0	11.7	NA	76.2	44.4
Tando Allahyar	921,185	92	21	38.1	44.2	85.8	63.8	55.1	54.5	11.7	NA	59.9	33.7
TM Khan	725,468	88	19	29.3	41.4	82.5	48.3	46.9	86.6	11.7	NA	48.9	36.7
Tharparkar	1,776,812	125	29	13.1	19.3	87.1	83.9	36.9	40.5	11.7	NA	21.1	21.6
Thatta	1,082,219	101	25	44.2	46.6	58.8	100.0	59.0	35.1	11.7	NA	50.2	27.4
Umer Kot	1,158,791	108	27	33.2	6.3	89.3	83.9	35.4	132.4	11.7	NA	33.0	37.1
Sindh	55,696,147			44.3	44.3	76.7	69.0	56.7	73.7	11.7	NA	76.0	40.3



NON-COMMUNICABLE DISEASES				SERVICES CAPACITY & ACCESS				UHC Index 2023	District UHC Index Ranking (Provincial)	District UHC Index Ranking (National)	District/Province/Area
Normal blood pressure	Normal blood sugar	Tobacco non-smoking	Non-Communicable Diseases Score	Hospital beds per 10,000 population	Physicians (Psychiatrists + Surgeons) density against threshold	International Health Regulations score capacity index (%)	Services Access & Capacity Score				
35.0	68.0	71.0	55.3	31.3	53.7	32.3	37.9	41.4	26	102	Badin
35.0	68.0	71.0	55.3	20.5	82.4	49.6	43.8	45.6	18	87	Dadu
35.0	68.0	71.0	55.3	21.9	67.0	40.3	39.0	45.3	20	91	Ghotki
35.0	68.0	71.0	55.3	122.1	93.4	56.2	86.2	63.9	2	3	Hyderabad
35.0	68.0	71.0	55.3	29.6	57.4	34.5	38.9	47.6	16	81	Jacobabad
35.0	68.0	71.0	55.3	50.9	74.6	44.9	55.5	50.3	11	68	Jamshoro
35.0	68.0	71.0	55.3	15.8	59.5	35.8	32.3	43.0	24	98	Kambar Shadad
35.0	68.0	71.0	55.3	32.2	111.4	67.0	62.2	58.1	4	17	Karachi Central
35.0	68.0	71.0	55.3	97.5	111.4	67.0	90.0	59.4	3	14	Karachi East
35.0	68.0	71.0	55.3	289.9	111.4	67.0	129.3	71.6	1	1	Karachi South
35.0	68.0	71.0	55.3	27.6	111.4	67.0	59.0	52.3	10	58	Karachi West
35.0	68.0	71.0	55.3	11.5	111.4	67.0	44.1	48.1	15	78	Keamari
35.0	68.0	71.0	55.3	6.0	61.4	37.0	23.9	29.9	30	129	Kashmor
35.0	68.0	71.0	55.3	46.0	72.5	43.6	52.6	49.6	12	70	Khairpur
35.0	68.0	71.0	55.3	32.3	111.4	67.0	62.2	56.4	6	28	Korangi
35.0	68.0	71.0	55.3	71.9	80.6	48.5	65.5	55.3	8	36	Larkana
35.0	68.0	71.0	55.3	48.0	111.4	67.0	71.0	57.1	5	22	Malir
35.0	68.0	71.0	55.3	23.9	74.2	44.7	42.9	48.2	14	77	Matiari
35.0	68.0	71.0	55.3	59.1	56.1	33.8	48.2	46.6	17	85	Mirpur Khas
35.0	68.0	71.0	55.3	19.1	86.7	52.2	44.3	49.4	13	72	Naushero Feroz
35.0	68.0	71.0	55.3	21.3	64.0	38.5	37.5	44.5	22	93	Sanghar
35.0	68.0	71.0	55.3	62.2	74.6	44.9	59.3	53.8	9	49	S. Benazirabad
35.0	68.0	71.0	55.3	26.6	67.8	40.8	41.9	43.4	23	96	Shikarpur
35.0	68.0	71.0	55.3	29.9	42.5	25.6	31.9	34.7	28	117	Sujawal
35.0	68.0	71.0	55.3	56.8	85.9	51.7	63.2	55.5	7	35	Sukkar
35.0	68.0	71.0	55.3	23.3	68.9	41.4	40.5	45.1	21	92	Tando Allahyar
35.0	68.0	71.0	55.3	62.9	49.2	29.6	45.1	45.5	19	88	TM Khan
35.0	68.0	71.0	55.3	19.9	29.6	17.8	21.9	31.3	29	125	Tharparkar
35.0	68.0	71.0	55.3	27.2	49.2	29.6	34.1	41.8	25	101	Thatta
35.0	68.0	71.0	55.3	37.8	42.0	25.3	34.2	39.7	27	108	Umer Kot
35.0	68.0	71.0	55.3	52.8	67.4	40.8	52.6	50.7			Sindh



KHYBER PAKHTUNKHWA

UHC SERVICE COVERAGE INDEX
2023

District/ Province/ Area	Population (2023)	District UHC Index Ranking (National)	District UHC Index Ranking (Provincial)	REPRODUCTIVE, MATERNAL, NEW-BORN AND CHILD HEALTH					INFECTIOUS DISEASE CONTROL				
				FP demand satisfied with modern method (%)	ANC - 4+ visits (%)	Child immunizati on (Penta 3) (%)	Care- seeking behavior for child pneumonia	RMNCH Score	TB effective treatment (%)	HIV treatment (%)	Insecticide- treated nets for malaria prevention	At least basic sanitation (%)	Infectious Diseases Score
Abbotabad	1,443,406	5	1	62.0	71.5	93.2	67.6	72.7	68.8	19.4	NA	96.2	50.5
Bajour District	1,310,045	95	22	74.6	33.3	61.2	68.3	56.8	19.6	19.4	NA	45.5	25.9
Bannu	1,381,175	71	13	65.7	17.5	68.1	69.5	48.3	67.8	19.4	NA	74.5	46.2
Batagram	563,635	86	21	32.5	17.8	38.8	78.3	36.4	64.5	19.4	NA	79.3	46.4
Buner	1,034,306	82	18	43.5	67.5	85.4	90.8	69.1	28.6	19.4	NA	67.0	33.4
Charsadda	1,866,978	67	11	60.4	43.7	57.4	68.9	56.8	49.0	19.4	NA	89.7	44.1
Chitral	524,782	54	9	73.7	35.0	90.4	25.0	49.1	80.3	19.4	NA	96.4	53.2
Dera Ismail Khan	1,861,188	84	20	46.9	23.6	77.2	92.1	53.0	46.7	19.4	NA	83.8	42.4
Hangu	537,971	76	16	22.0	47.6	47.7	79.9	44.7	76.4	19.4	NA	95.6	52.2
Haripur	1,194,928	31	5	61.0	68.2	93.8	76.3	73.9	35.9	19.4	NA	93.9	40.4
Karak	829,868	83	19	30.7	44.1	48.7	61.4	44.9	40.5	19.4	NA	92.1	41.7
Khyber District	1,165,923	109	26	53.1	27.7	70.9	67.2	51.5	44.8	19.4	NA	66.2	38.7
Kohat	1,255,832	75	15	36.6	19.3	71.7	62.3	42.1	59.4	19.4	NA	88.0	46.7
Kohistan	345,847	146	32	21.2	2.2	15.1	17.8	10.6	27.0	19.4	NA	61.4	31.8
Kurram District	798,902	112	27	45.7	60.8	82.7	70.3	63.4	17.2	19.4	NA	65.9	28.1
Lakki Marwat	1,058,704	79	17	49.4	27.2	56.2	63.3	46.8	68.1	19.4	NA	85.1	48.4
Lower Dir	1,678,480	69	12	59.7	47.9	69.3	55.5	57.6	33.4	19.4	NA	84.0	38.0
Malakand	840,418	23	3	54.7	58.2	76.7	72.1	64.8	51.5	19.4	NA	93.9	45.5
Mansehra	1,827,994	74	14	51.5	37.7	82.3	39.4	50.1	40.2	19.4	NA	90.9	41.5
Mardan	2,791,966	46	7	61.6	59.4	67.9	60.7	62.3	46.7	19.4	NA	90.8	43.6
Mohmand District	563,432	123	30	51.3	24.2	51.3	49.1	42.1	25.3	19.4	NA	32.2	25.1
North Waziristan	705,221	120	28	58.3	15.0	14.0	62.3	29.6	31.2	19.4	NA	56.6	32.5
Nowshera	1,770,554	44	6	73.2	63.5	67.9	80.1	70.9	39.3	19.4	NA	92.6	41.4
Orakzai District	394,207	106	25	57.7	29.4	61.8	70.1	52.1	36.3	19.4	NA	79.7	38.3
Peshawar	4,854,946	6	2	71.5	56.1	77.0	67.1	67.5	97.4	19.4	NA	94.6	56.4
Shangla	906,535	59	10	74.5	52.6	73.0	93.4	71.9	72.1	19.4	NA	72.6	46.7
S Waziristan	903,914	121	29	62.7	17.3	25.6	44.9	33.4	25.1	19.4	NA	50.2	29.1
Swabi	1,927,088	47	8	70.6	58.1	77.3	75.9	70.0	34.9	19.4	NA	94.2	40.0
Swat	2,733,466	27	4	86.8	50.6	80.2	74.8	71.6	44.5	19.4	NA	89.6	42.7
Tank	478,357	103	24	49.7	8.7	35.1	67.3	31.8	56.6	19.4	NA	74.5	43.5
Torghar	203,882	142	31	8.5	5.5	35.0	26.8	14.5	27.0	19.4	NA	51.5	30.0
Upper Dir	1,102,147	97	23	44.0	39.1	55.8	77.9	52.3	28.2	19.4	NA	88.4	36.5
Khyber Pakhtunkhwa	40,856,097			50.2	44.6	70.9	70.0	57.7	55.0	19.4	NA	84.0	44.8



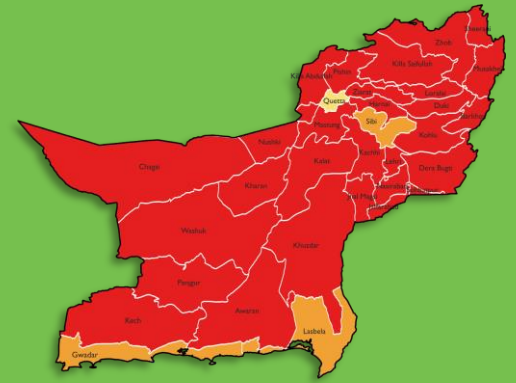
NON-COMMUNICABLE DISEASES				SERVICES CAPACITY & ACCESS				UHC Index 2023	District UHC Index Ranking (Provincial)	District UHC Index Ranking (National)	District/Province/Area
Normal blood pressure	Normal blood sugar	Tobacco non-smoking	Non-Communicable Diseases Score	Hospital beds per 10,000 population	Physicians (Psychiatrists + Surgeons) density against threshold	International Health Regulations core capacity index (%)	Services Access & Capacity Score				
35.0	68.0	71.0	55.3	123.1	73.1	59.7	81.3	63.7	1	5	Abbotabad
35.0	68.0	71.0	55.3	27.4	66.3	54.2	46.2	44.0	22	95	Bajour District
35.0	68.0	71.0	55.3	40.6	58.9	48.1	48.6	49.5	13	71	Bannu
35.0	68.0	71.0	55.3	54.3	48.5	39.6	47.1	45.8	21	86	Batagram
35.0	68.0	71.0	55.3	31.1	50.7	41.4	40.3	47.6	18	82	Buner
35.0	68.0	71.0	55.3	30.3	64.0	52.3	46.6	50.4	11	67	Charsadda
35.0	68.0	71.0	55.3	48.0	64.8	52.9	54.8	53.1	9	54	Chitral
35.0	68.0	71.0	55.3	33.7	47.7	38.9	39.7	47.1	20	84	Dera Ismail Khan
35.0	68.0	71.0	55.3	28.1	57.1	46.6	42.1	48.3	16	76	Hangu
35.0	68.0	71.0	55.3	53.7	70.3	57.5	60.1	56.1	5	31	Haripur
35.0	68.0	71.0	55.3	42.8	59.1	48.3	49.6	47.6	19	83	Karak
35.0	68.0	71.0	55.3	27.7	20.8	17.0	21.4	39.2	26	109	Khyber District
35.0	68.0	71.0	55.3	40.4	62.5	51.0	50.5	48.4	15	75	Kohat
35.0	68.0	71.0	55.3	7.7	22.0	18.0	14.5	22.8	32	146	Kohistan
35.0	68.0	71.0	55.3	34.5	20.8	17.0	23.0	38.8	27	112	Kurram District
35.0	68.0	71.0	55.3	30.2	55.4	45.3	42.3	48.0	17	79	Lakki Marwat
35.0	68.0	71.0	55.3	48.7	57.7	47.1	51.0	49.8	12	69	Lower Dir
35.0	68.0	71.0	55.3	75.6	66.3	54.2	64.7	57.0	3	23	Malakand
35.0	68.0	71.0	55.3	35.0	65.0	53.1	49.4	48.8	14	74	Mansehra
35.0	68.0	71.0	55.3	50.9	67.6	55.2	57.5	54.2	7	46	Mardan
35.0	68.0	71.0	55.3	17.9	20.8	17.0	18.5	32.2	30	123	Mohmand District
35.0	68.0	71.0	55.3	33.6	20.8	17.0	22.8	33.2	28	120	North Waziristan
35.0	68.0	71.0	55.3	43.0	67.0	54.7	54.0	54.4	6	44	Nowshera
35.0	68.0	71.0	55.3	39.2	20.8	17.0	24.0	40.3	25	106	Orakzai District
35.0	68.0	71.0	55.3	111.7	72.6	59.3	78.4	63.7	2	6	Peshawar
35.0	68.0	71.0	55.3	41.1	42.1	34.4	39.0	51.9	10	59	Shangla
35.0	68.0	71.0	55.3	31.8	20.8	17.0	22.4	33.1	29	121	S Waziristan
35.0	68.0	71.0	55.3	49.6	62.8	51.3	54.3	53.9	8	47	Swabi
35.0	68.0	71.0	55.3	76.2	59.4	48.5	60.3	56.5	4	27	Swat
35.0	68.0	71.0	55.3	32.1	44.1	36.0	37.1	41.0	24	103	Tank
35.0	68.0	71.0	55.3	7.7	23.1	18.8	15.0	24.5	31	142	Torgarh
35.0	68.0	71.0	55.3	33.5	36.0	29.4	32.9	43.2	23	97	Upper Dir
35.0	68.0	71.0	55.3	53.2	49.5	40.8	47.5	51.0			Khyber Pakhtunkhwa



BALUCHISTAN

UHC SERVICE COVERAGE INDEX 2023

District/ Province/ Area	Population (2023)	District UHC Index Ranking (National)	District UHC Index Ranking (Provincial)	REPRODUCTIVE, MATERNAL, NEW-BORN AND CHILD HEALTH					INFECTIOUS DISEASE CONTROL				
				FP demand satisfied with modern method (%)	ANC - 4+ visits (%)	Child immunizati on (Penta 3) (%)	Care- seeking behavior for child pneumonia	RMNCH Score	TB effective treatment (%)	HIV treatment (%)	Insecticide- treated nets for malaria prevention	At least basic sanitation (%)	Infectious Diseases Score
Awaran	182,375	151	32	16.7	3.5	52.6	26.0	16.8	18.6	16.3	NA	2.5	9.1
Barkhan	214,263	140	23	12.3	13.0	83.9	23.5	23.7	30.8	16.3	NA	22.7	22.5
Chaghi	274,331	141	24	18.7	1.4	87.9	69.7	20.0	30.2	16.3	NA	12.2	18.2
Dera Bhugti	362,057	152	33	42.0	0.0	77.5	64.7	6.8	11.9	16.3	NA	24.0	16.7
Duki	208,959	139	22	25.6	13.0	77.1	73.4	37.0	0.8	16.3	NA	89.9	10.7
Gwadar	310,986	104	2	42.5	54.3	71.1	85.4	61.2	11.5	16.3	NA	62.1	22.7
Harnai	130,007	134	17	46.4	22.7	71.1	48.0	43.5	15.7	16.3	NA	12.3	14.7
Jaffarabad	605,909	128	12	29.8	0.8	43.4	81.3	17.0	66.1	16.3	NA	55.8	39.1
Jhal Magsi	207,251	131	14	20.0	6.4	48.7	81.3	26.7	125.9	16.3	NA	12.2	29.2
Kachhi	451,062	147	28	7.8	2.8	17.8	81.3	13.3	14.7	16.3	NA	13.8	14.9
Kalat	276,745	149	30	15.0	6.1	33.9	50.0	19.8	7.1	16.3	NA	1.6	5.7
Kech	1,081,186	122	8	40.9	29.0	36.0	85.4	43.7	11.1	16.3	NA	15.5	14.1
Kharan	265,323	137	20	39.7	6.5	89.3	94.5	38.4	28.0	16.3	NA	2.3	10.1
Khuzdar	1,016,253	148	29	18.2	5.1	45.5	50.0	21.4	18.6	16.3	NA	0.9	6.5
Killa Abdullah	368,882	150	31	22.1	2.8	44.7	44.3	18.7	0.4	16.3	NA	35.5	6.3
Killa Saifullah	387,459	133	16	9.3	4.2	44.0	73.4	18.8	48.4	16.3	NA	9.3	19.4
Kohlu	265,188	127	11	39.1	4.8	59.3	84.0	31.1	5.0	16.3	NA	94.2	19.8
Lasbela	693,978	107	4	71.0	56.5	32.2	92.5	58.8	23.2	16.3	NA	63.7	28.9
Lehri	475,119	136	19	8.8	9.5	34.0	64.7	20.7	9.8	16.3	NA	72.8	22.6
Loralai	277,633	115	5	25.6	13.0	25.0	73.4	28.0	36.3	16.3	NA	72.8	35.0
Musakhel	185,755	135	18	8.6	8.7	17.3	73.4	17.6	14.4	16.3	NA	72.8	25.7
Mustang	319,252	124	9	22.7	20.4	49.1	22.1	26.6	17.4	16.3	NA	29.6	20.3
Nasirabad	574,133	130	13	37.2	1.0	32.2	81.3	17.7	46.6	16.3	NA	54.1	34.5
Nushki	211,802	143	25	1.2	2.9	89.1	55.5	11.5	35.2	16.3	NA	7.0	15.9
Panjgur	519,514	119	7	35.1	29.8	83.4	85.4	52.2	13.4	16.3	NA	12.2	13.9
Pishin	851,433	118	6	18.3	15.8	21.9	66.8	25.5	30.5	16.3	NA	65.2	31.9
Quetta	2,645,045	63	1	52.6	34.4	48.4	66.8	49.2	54.1	16.3	NA	75.2	40.5
Sherani	195,347	145	27	9.5	4.3	24.9	47.6	14.8	40.6	16.3	NA	20.6	23.9
Sibi	228,427	105	3	29.5	16.3	34.0	64.7	32.1	77.5	16.3	NA	34.6	35.2
Sohbatput	244,690	126	10	25.7	10.0	72.6	81.3	35.1	26.5	16.3	NA	36.0	24.9
Washuk	308,401	144	26	60.7	4.8	87.3	69.7	36.5	9.3	16.3	NA	12.2	12.3
Zhob	362,483	132	15	29.7	2.0	23.7	73.4	17.9	60.8	16.3	NA	20.6	27.3
Ziarat	193,154	138	21	13.1	21.3	68.3	44.8	30.4	5.8	16.3	NA	5.2	7.9
Balochistan	14,894,402			34.5	17.4	45.9	67.6	36.9	33.3	16.2	NA	44.0	28.8



NON-COMMUNICABLE DISEASES				SERVICES CAPACITY & ACCESS				UHC Index 2023	District UHC Index Ranking (Provincial)	District UHC Index Ranking (National)	District/Province/Area
Normal blood pressure	Normal blood sugar	Tobacco non-smoking	Non-communicable Diseases Score	Hospital beds per 10,000 population	Physicians (Psychiatrists**/Surgeons) density against threshold	International Health Regulations score capacity index (%)	Services Access & Capacity Score				
35.0	68.0	71.0	55.3	21.3	12.8	13.6	15.5	19.0	32	151	Awaran
35.0	68.0	71.0	55.3	5.2	25.4	27.1	15.3	25.9	23	140	Barkhan
35.0	68.0	71.0	55.3	26.3	17.5	18.6	20.5	25.3	24	141	Chaghi
35.0	68.0	71.0	55.3	16.9	15.5	16.5	16.3	17.9	33	152	Dera Bhugti
35.0	68.0	71.0	55.3	21.3	20.0	21.3	20.8	26.0	22	139	Duki
35.0	68.0	71.0	55.3	41.1	32.7	34.8	36.0	40.8	2	104	Gwadar
35.0	68.0	71.0	55.3	25.6	13.6	14.4	17.1	27.9	17	134	Harnai
35.0	68.0	71.0	55.3	19.3	25.4	27.1	23.7	30.6	12	128	Jaffarabad
35.0	68.0	71.0	55.3	21.4	13.5	14.4	16.1	28.9	14	131	Jhal Magsi
35.0	68.0	71.0	55.3	19.7	25.4	27.1	23.9	22.6	28	147	Kachhi
35.0	68.0	71.0	55.3	39.1	29.9	31.8	33.4	21.4	30	149	Kalat
35.0	68.0	71.0	55.3	36.1	32.7	34.8	34.5	32.9	8	122	Kech
35.0	68.0	71.0	55.3	19.9	21.4	22.8	21.3	26.0	20	137	Kharan
35.0	68.0	71.0	55.3	23.0	30.4	32.3	28.3	21.6	29	148	Khuzdar
35.0	68.0	71.0	55.3	36.6	17.6	18.7	22.9	19.6	31	150	Killa Abdullah
35.0	68.0	71.0	55.3	31.5	31.1	33.1	31.9	28.4	16	133	Killa Saifullah
35.0	68.0	71.0	55.3	48.2	19.7	21.0	27.1	31.0	11	127	Kohlu
35.0	68.0	71.0	55.3	22.0	30.7	32.7	28.0	40.3	4	107	Lasbela
35.0	68.0	71.0	55.3	7.0	32.5	34.6	19.9	26.8	19	136	Lehri
35.0	68.0	71.0	55.3	56.0	28.1	29.9	36.1	37.4	5	115	Loralai
35.0	68.0	71.0	55.3	17.9	27.1	28.9	24.1	27.9	18	135	Musakhel
35.0	68.0	71.0	55.3	34.8	33.9	36.0	34.9	32.0	9	124	Mustang
35.0	68.0	71.0	55.3	22.3	22.9	24.4	23.2	29.7	13	130	Nasirabad
35.0	68.0	71.0	55.3	39.3	32.5	34.6	35.4	24.4	25	143	Nushki
35.0	68.0	71.0	55.3	27.8	32.7	34.8	31.6	33.5	7	119	Panjgur
35.0	68.0	71.0	55.3	23.5	35.6	37.8	31.6	34.5	6	118	Pishin
35.0	68.0	71.0	55.3	100.8	49.0	52.1	63.6	51.4	1	63	Quetta
35.0	68.0	71.0	55.3	8.5	21.8	23.2	16.3	23.8	27	145	Sherani
35.0	68.0	71.0	55.3	71.7	32.5	34.6	43.2	40.5	3	105	Sibi
35.0	68.0	71.0	55.3	13.6	22.9	24.4	19.7	31.2	10	126	Sohbatput
35.0	68.0	71.0	55.3	11.7	13.9	14.8	13.4	24.0	26	144	Washuk
35.0	68.0	71.0	55.3	33.0	21.8	23.2	25.5	28.8	15	132	Zhob
35.0	68.0	71.0	55.3	78.8	22.2	23.6	34.6	26.0	21	138	Ziarat
35.0	68.0	71.0	55.3	40.5	34.0	36.6	36.9	38.4			Balochistan

AZAD JAMMU AND KASHMIR

UHC SERVICE COVERAGE INDEX 2023

District/ Province/ Area	Population (2023)	District UHC Index Ranking (National)	District UHC Index Ranking (Provincial)	REPRODUCTIVE, MATERNAL, NEW-BORN AND CHILD HEALTH					INFECTIOUS DISEASE CONTROL				
				FP demand satisfied with modern method (%)	ANC - 4+ visits (%)	Child immunizati on (Penta 3) (%)	Care- seeking behavior for child for child pneumonia	RMNCH Score	TB effective treatment (%)	HIV treatment (%)	Insecticide- treated nets for malaria prevention	At least basic sanitation (%)	Infectious Diseases Score
Bagh	398,836	39	3	45.7	54.4	96.3	66.6	63.2	80.6	14.7	NA	84.0	46.4
Bhimber	230,110	15	2	72.4	60.0	98.3	64.4	72.4	66.8	14.7	NA	89.2	44.5
Hattian Bala/J. Valley	247,213	100	9	37.7	36.3	91.0	35.1	45.7	55.2	14.7	NA	72.9	39.0
Haveli	253,346	99	8	55.7	17.4	92.2	66.6	49.4	44.4	14.7	NA	64.8	34.9
Kotli	920,438	48	4	61.0	60.6	97.2	64.4	69.4	45.2	14.7	NA	81.1	37.8
Mirpur	579,430	12	1	53.8	73.1	97.8	64.4	70.5	48.4	14.7	NA	91.2	40.2
Muzaffarabad	787,653	60	5	40.8	34.5	93.1	52.3	51.2	63.9	14.7	NA	82.4	42.7
Neelum	205,097	114	10	29.0	7.7	87.2	27.5	27.1	39.0	14.7	NA	65.0	33.4
Poonch	536,800	65	7	49.4	54.3	95.5	66.6	64.3	35.9	14.7	NA	83.1	35.3
Sudhnoti	409,334	62	6	56.5	59.9	98.0	64.4	68.0	49.8	14.7	NA	85.3	39.7
Azad Jammu and Kashmir	4,568,257			51.6	49.2	95.6	52.8	59.8	53.4	14.7	NA	82.3	40.1

GILGIT BALTISTAN

UHC SERVICE COVERAGE INDEX 2023

District/ Province/ Area	Population (2023)	District UHC Index Ranking (National)	District UHC Index Ranking (Provincial)	REPRODUCTIVE, MATERNAL, NEW-BORN AND CHILD HEALTH					INFECTIOUS DISEASE CONTROL				
				FP demand satisfied with modern method (%)	ANC - 4+ visits (%)	Child immunizati on (Penta 3) (%)	Care- seeking behavior for child for child pneumonia	RMNCH Score	TB effective treatment (%)	HIV treatment (%)	Insecticide- treated nets for malaria prevention	At least basic sanitation (%)	Infectious Diseases Score
Astore	113,147	90	5	46.4	14.5	69.6	51.4	39.4	67.2	14.7	NA	78.6	42.7
Diامر	305,498	111	8	46.4	5.2	39.5	46.3	25.8	120.9	14.7	NA	61.1	47.7
Ghanche	181,036	113	9	46.4	11.7	98.3	72.6	44.4	11.7	14.7	NA	98.6	25.7
Ghizer	192,350	80	4	46.4	68.3	96.0	79.1	70.0	31.2	14.7	NA	92.6	34.9
Gilgit	328,127	53	2	46.4	53.6	79.1	72.3	61.4	120.9	14.7	NA	92.1	54.7
Hunza	56,574	51	1	46.4	92.2	98.1	87.2	77.8	16.6	14.7	NA	98.8	28.9
Kharmang	56,574	116	10	46.4	8.5	95.0	75.2	41.0	4.2	14.7	NA	91.4	17.8
Nagar	79,203	94	6	46.4	30.1	96.9	79.3	57.2	14.6	14.7	NA	93.6	27.2
Shigar	79,203	110	7	46.4	11.0	99.2	69.5	43.3	10.5	14.7	NA	94.3	24.4
Skardu	294,183	73	4	46.4	24.8	99.2	56.1	50.3	80.8	14.7	NA	91.2	47.7
Gilgit Baltistan	1,685,895			46.4	27.9	82.2	76.3	56.4	95.0	14.7	NA	86.0	49.3

ISLAMABAD

UHC SERVICE COVERAGE INDEX 2023

District/ Province/ Area	Population (2023)	District UHC Index Ranking (National)	District UHC Index Ranking (Provincial)	REPRODUCTIVE, MATERNAL, NEW-BORN AND CHILD HEALTH					INFECTIOUS DISEASE CONTROL				
				FP demand satisfied with modern method (%)	ANC - 4+ visits (%)	Child immunizati on (Penta 3) (%)	Care- seeking behavior for child for child pneumonia	RMNCH Score	TB effective treatment (%)	HIV treatment (%)	Insecticide- treated nets for malaria prevention	At least basic sanitation (%)	Infectious Diseases Score
Islamabad	2,218,678	4	1	55.1	80.8	86.5	83.6	75.3	42.9	14.7	NA	99.0	39.7



NON-COMMUNICABLE DISEASES				SERVICES CAPACITY & ACCESS				UHC Index 2023	District UHC Index Ranking (Provincial)	District UHC Index Ranking (National)	District/Province/Area
Normal blood pressure	Normal blood sugar	Tobacco non-smoking	Non-Communicable Diseases Score	Hospital beds per 10,000 population	(Physicians'P sychiatrist'Su rgeon) rgeon) density against threshold (%)	International Health Regulations core capacity index (%)	Services Access & Capacity Score				
35.0	68.0	71.0	55.3	50.0	60.1	57.6	55.7	54.8	3	39	Bagh
35.0	68.0	71.0	55.3	84.3	60.1	57.6	66.3	58.6	2	15	Bhimber
35.0	68.0	71.0	55.3	11.2	60.1	57.6	33.9	42.8	9	100	Hattian Bala/J. Valley
35.0	68.0	71.0	55.3	13.2	60.1	57.6	35.7	42.9	8	99	Haveli
35.0	68.0	71.0	55.3	55.8	60.1	57.6	57.8	53.8	4	48	Kotli
35.0	68.0	71.0	55.3	160.8	60.1	57.6	82.3	59.9	1	12	Mirpur
35.0	68.0	71.0	55.3	62.0	60.1	57.6	59.9	51.8	5	60	Muzaffarabad
35.0	68.0	71.0	55.3	24.4	60.1	57.6	43.9	38.5	10	114	Neelum
35.0	68.0	71.0	55.3	44.6	60.1	57.6	53.7	50.9	7	65	Poonch
35.0	68.0	71.0	55.3	32.3	60.1	57.6	48.2	51.8	6	62	Sudhnoti
35.0	68.0	71.0	55.3	61.5	48.4	46.8	51.8	51.2			Azad Jammu and Kashmir



NON-COMMUNICABLE DISEASES				SERVICES CAPACITY & ACCESS				UHC Index 2023	District UHC Index Ranking (Provincial)	District UHC Index Ranking (National)	District/Province/Area
Normal blood pressure	Normal blood sugar	Tobacco non-smoking	Non-Communicable Diseases Score	Hospital beds per 10,000 population	(Physicians'P sychiatrist'Su rgeon) rgeon) density against threshold (%)	International Health Regulations core capacity index (%)	Services Access & Capacity Score				
35.0	68.0	71.0	55.3	57.9	39.5	41.1	45.5	45.3	5	90	Astore
35.0	68.0	71.0	55.3	23.6	39.5	41.1	33.7	38.9	8	111	Diamer
35.0	68.0	71.0	55.3	27.0	39.5	41.1	35.3	38.6	9	113	Ghanche
35.0	68.0	71.0	55.3	34.1	39.5	41.1	38.1	47.6	4	80	Ghizer
35.0	68.0	71.0	55.3	47.9	39.5	41.1	42.7	53.1	2	53	Gilgit
35.0	68.0	71.0	55.3	166.9	39.5	41.1	64.7	53.2	1	51	Hunza
35.0	68.0	71.0	55.3	34.4	39.5	41.1	38.2	35.2	10	116	Kharmang
35.0	68.0	71.0	55.3	56.1	39.5	41.1	45.0	44.4	6	94	Nagar
35.0	68.0	71.0	55.3	38.6	39.5	41.1	39.7	39.0	7	110	Shigar
35.0	68.0	71.0	55.3	50.2	39.5	41.1	43.4	49.0	4	73	Skardu
35.0	68.0	71.0	55.3	57.9	43.7	45.7	44.6	50.4			Gilgit Baltistan



Islamabad

NON-COMMUNICABLE DISEASES				SERVICES CAPACITY & ACCESS				UHC Index 2023	District UHC Index Ranking (Provincial)	District UHC Index Ranking (National)	District/Province/Area
Normal blood pressure	Normal blood sugar	Tobacco non-smoking	Non-Communicable Diseases Score	Hospital beds per 10,000 population	(Physicians'P sychiatrist'Su rgeon) rgeon) density against threshold (%)	International Health Regulations core capacity index (%)	Services Access & Capacity Score				
35.0	68.0	71.0	55.3	205.7	72.1	68.6	100.6	63.8	1	4	Islamabad



METHODOLOGY USED FOR DISTRICT LEVEL ESTIMATION FOR UHC SERVICE COVERAGE INDEX

Pakistan Bureau of Statistics Population Census 2023.

A Reproductive, Maternal, New-Born and Child Health (RMNCH) / Age Related Cluster

1: Family Planning Demand Satisfied with Modern Method (%) The data source used for 2015 and 2016 is PDHS 2012-13 and from 2017 to 2023, PDHS 2017-18 is used. For KP, Sindh, Balochistan and AJ&K, MICS 2019, 2018-19 2019-20 and 2020-21 are used for 2022 and 2023 figures. District-level information is referenced from the respective provincial Multiple Indicator Cluster Surveys. In the case of GB, PDHS 2017-18 data is replicated at the district level.

2: Antenatal Care - 4+ Visits (%) At the National and provincial level, the data is referenced from PDHS. For KP, Sindh, Balochistan and AJ&K, MICS 2019, 2018-19, 2019-20 and 2020-21 are used for 2023 figures respectively. At the district level, Punjab-MICS 2014 is used for the year 2015 and 2016, and MICS 2017-18 is used for 2017-2023, Sindh-MICS 2014 is used for 2015 to 2019 and MICS 2018-19 for the years 2020 till 2023. However, for Khyber Pakhtunkhwa, MICS 2016-17 is used for the years 2015 to 2020 and MICS 2019 for the years 2021 till 2023. For Balochistan districts, MICS 2010 is used for 2015-2020 and MICS 2019-20 is used for 2021 till 2023. AJ&K DHS 2010 is used for the year 2015 and 2016. However, for the year 2017-2020, PDHS 2017-18 information is replicated at the district level and MICS 2020-21 is used for the years 2021 till 2023. GB MICS 2016-17 is used for all the years (2015-2023).

3: Child immunization (Penta 3) (%) At the National and provincial levels, the data is referenced from PDHS for the years 2015-2019, However, from 2020 to 2023, EPI Third Party Verification Immunisation Surveys (Round I & II) are referenced at the national, provincial and district levels. Punjab MICS 2014 is used for the years 2015 and 2016, and MICS 2017-18 for the years 2017 to 2019. Sindh MICS 2014 is used for the years 2015- 2019. For Khyber Pakhtunkhwa, PSLM 2014-15 is used for the year 2015 and MICS 2016-17 is used for the years 2016-2019. For Balochistan, PSLM 2014-15 is considered from 2015 to 2019 and currently MICS 2019-20 is referenced. For AJ&K DHS 2010 is used for 2015 & 2016 and PDHS 2017-18 for 2017 to 2019. GB MICS 2016-17 used for the years 2015-2019.

4: Care-Seeking Behaviour for Child Pneumonia (%) PDHS is referenced at the national and the provincial levels for the years 2015-2023. For KP, Sindh, Balochistan and AJ&K, MICS 2019, 2018-19, 2019-20 and 2020-21 used for 2023 respectively. For Punjab, the district level information for the year 2015 and 2016 is calculated based on PDHS 2012-13, provincial information and the weightage of the District Human Development Index. However, from the years 2017 to 2023, the Punjab MICS 2017-18 is used. Sindh MICS 2014 is used for the years 2015-2019, and for 2020 to 2023, MICS 2018-19 is referenced. For Khyber Pakhtunkhwa, MICS 2016-17 is used from the years 2015 to 2020 and MICS 2019 for 2021 till 2023. For Balochistan, MICS 2010 is used as a reference for 2015-2020 and MICS 2019-20 for 2021 till 2023. For AJ&K, DHS 2010 is considered for 2015 and 2016 and from 2017 to 2020, PDHS 2017-18 is referenced and data is replicated at the district level. For 2021 till 2023, AJ&K MICS 2020-21 is referenced. For Gilgit Baltistan, MICS 2016 is used for the years 2015-2023.

B INFECTIOUS/ COMMUNICABLE DISEASES (CD)

5: Tuberculosis Effective Treatment (%) It is calculated by considering two indicators: case detection rate and treatment success rate. The data is provided by the National TB control programme

6: HIV Treatment (%) The data is provided by the National AIDS Control Program, considering estimates of people living with HIV in each province and then taking the percentage of ART coverage. For AJ&K, GB and ICT, we considered Punjab figures for these areas as their data is not separately mentioned for the estimated population but included in Punjab.

7: Insecticide-Treated Nets for Malaria Prevention (%) This indicator is not being used at the international level.

8: At Least Basic Sanitation (%) The data is taken from PSLM 2014-15 for 2015 to 2017 and PSLM 2018-19 for the years 2018 till 2023. For AJ&K and GB the latest MICS data was used for 2021 till 2023.

C NON-COMMUNICABLE DISEASES (NCD)

9: Prevalence of Treatment (taking medication) for Hypertension (%) Extracted data from the WHO global UHC Monitoring reports for Pakistan.

10: Mean Fasting Plasma Glucose (FPG) (%) Used data from the WHO global UHC Monitoring reports for Pakistan. The indicator is a continuous measure (units of mmol/l) and is not measured on a scale bounded between 0 and 100%. To account for this range, estimates of national mean FPG is rescaled using a minimum of 5.1 mmol/L (the midpoint of minimum theoretical risk) and a maximum of 7.41 mmol/L (the maximum across national means). The rescaled indicator for mean FPG = $(7.41-X) / (7.41-5.1)$, where X is mean FPG.

11: Tobacco Non-Smoking (%) Used data from the WHO global UHC Monitoring reports for Pakistan. Prevalence of tobacco non-use is computed as 1 minus the prevalence of tobacco use. The indicator is then rescaled based on a non-zero minimum to obtain a finer resolution: rescaled tobacco non-use = $(X-30)/(100-30)*100$.

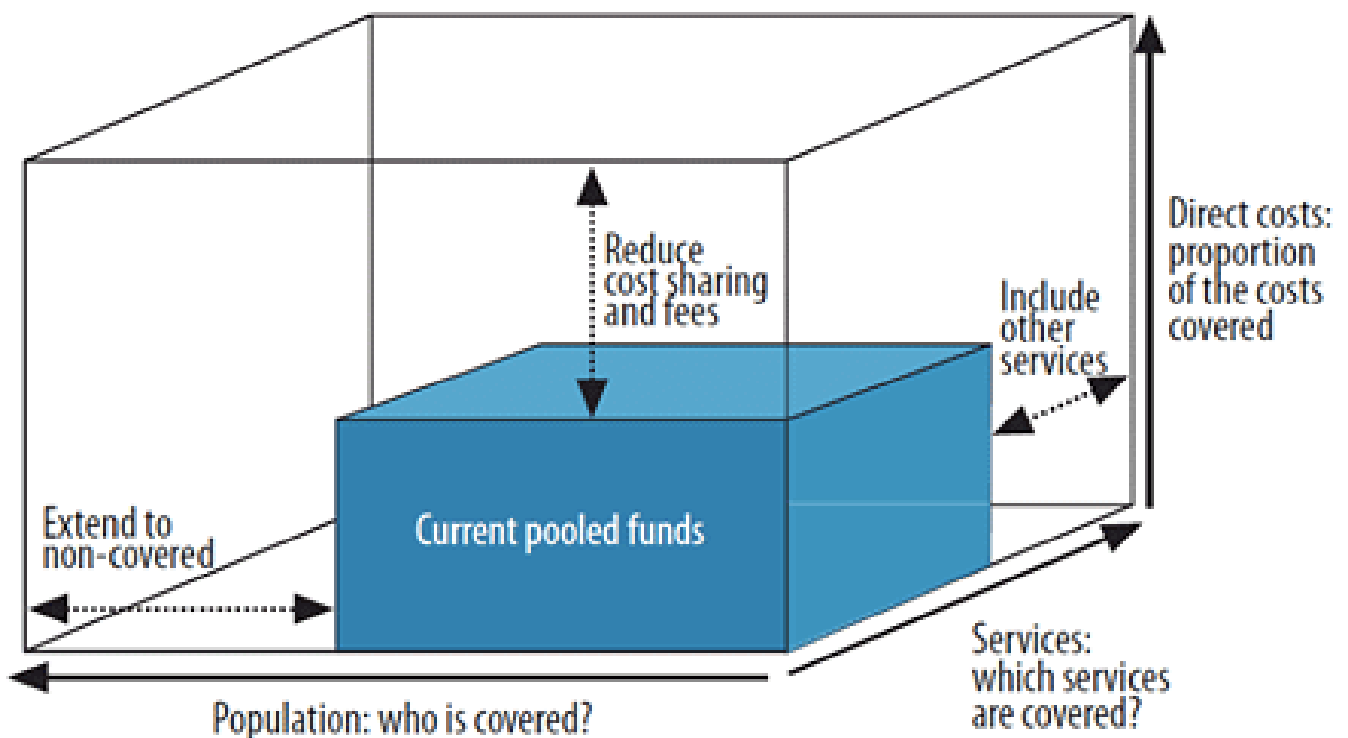
D

SERVICES CAPACITY AND ACCESS (SCA)

12: Hospital Beds per 10,000 Population Against Threshold (%) From 2020 to 2023, the hospital bed densities are calculated based on the data provided by the provincial/area health departments. This data includes both the public and private hospital bed numbers at the provincial and district levels. However, for the years 2015-2019, the hospital bed densities at the district level are calculated from provincial information using the weightage of the Human Development Index from 2015-2019. For these years, provincial information is referenced from the Statistical Yearbook, whereas, for Federating Areas, reports of the respective Planning and Development Departments were used. For the years 2015-2019, data is only documented for the public sector and private sector data is not available for all provinces/ areas. Hospital bed density values were rescaled and capped based on a threshold of 18 per 10,000. Values below 18 per 10,000 are rescaled as $X/18*100$, where X is hospital beds per 10,000, and values above 18 per 10,000 are set to 100.

13: (Physicians*Psychiatrist*Surgeon) Density Against Threshold (%) This data is provided by the Pakistan Medical & Dental Council (PMDC). For ICT, the densities of human resource were calculated based on ICT health facilities mapping data and subtracted from the Punjab data (as ICT data is included in the Punjab data provided by PMDC). For GB, the PMDC provided the figures with AJ&K, with the HR percent distribution of 25% and 75% among GB and AJ&K respectively. The categories of surgeons include general surgeons, gynaecologists/obstetricians, urologists, neuro, cardiac, orthopaedic, and thoracic surgeons etc. The health worker density (HWD) is rescaled and capped based on threshold values. Physician density has a threshold of 0.9 per 1000, psychiatrists have a threshold of 1 per 100,000, and surgeons have a threshold of 14 per 100,000. After rescaling these values (i.e., minimum $(100, X/threshold*100)$, where X is the cadre-specific density, they are combined into a HWD composite variable for entry into the above index calculations, computed as $(\text{physicians} * \text{psychiatrists} * \text{surgeons}).1/3$.

14: International Health Regulations Core Capacity Index (%) The 15 Core capacities from the 2023 JEE Report are used to calculate the IHR index, and provincial/federating areas and district level figures were estimated using the the weightage of HDI.



UNIVERSAL HEALTH COVERAGE INDEX AT DISTRICT, PROVINCIAL AND NATIONAL LEVEL 2024



Government of Pakistan
Ministry of National Health Services,
Regulations & Coordination



UK International
Development

Partnership | Progress | Prosperity

Analyse | Strategize | Action
HPSIU
Shaping Pakistan's Future Health

For more information, please contact:
UK's Evidence for Health (E4H) Programme
Ministry of National Health Services, Regulations and
Coordination (NHSR&C)

<http://nhsrsrc.gov.pk> | <http://phkh.nhsrsrc.pk>

Global Target 2030: 80+
National Target 2030: 65+
Target 2023: 55+

**40% OF POPULATION
WITH UHC (BASELINE 2015)**

